

President
Walter Deijnckens
Mariettalie 38
2930 Brasschaat
Belgium
e-mail:
walter.deijnckens@skynet.be



General Secretary
Michel Hopperets
Ave., Van Kelken 4/70
1070 Bruxelles
e-mail:
michel.hopperets@village.uunet.be

BULLETIN 135

July 2005

Bulletin Editor
Stuart S. Smith
'Lychgates', Pinfold Hill
Curbar-Calver,
Hope Valley, S32 3YL
England
e-mail:
mailto:sssCongo@aol.com

Librarian
Allan J.D. MacLaren
'Moray', 43 Millar Street,
Carnoustie. DD7 7AT
Scotland
e-mail:
allanjdmaclaren@blueyonder.co.uk

CONTENTS	Page(s)
From the Editor	- Stuart Smith
The Bulletin	2
The Index – 4 th edition	2
Membership news	2
Minutes of the A.G.M. 16 April 2005	3-7
Regional 'Officers' addresses	7
Insufficiently Paid	- Philippe Lindekens 8
Foreign Censor marks – continued	
Gold Coast	- Walter Deijnckens 9-11
Post mark – enquiry	- Andrew Ramsey 11
Leopoldville – use of the 'Straight-line' griffe	- Philippe Lindekens 12-15
Library – Books available on loan to members	16-17
Books for sale – 'Roger Gallant' book list	18
Auction 2005 (3) and results of 2005 (2)	Supplemental
INDEX (4th edition, 1951-2004)	Supplemental

B.C.S.C. website: <http://users.skynet.be/lindekens/>

From the Editor

The Bulletin

Several of our members have chosen to receive the Bulletin directly as an attachment to an email. This provides them with rather more colourful copy and of course removes any of the vagaries of slow or lost mail, which is a particular problem in some overseas countries. Should any member wish to be added to the list, please contact me accordingly. For those of our 'Rest of the World' overseas members this will reduce the annual subscription. Please refer to the 'Treasurer's report' in the AGM minutes, page 4.

The Index

As previously reported, work on preparation of a new edition of the 'Index' has been progressing and we are pleased to confirm its completion. All members will receive a complimentary copy through the post, including those who have chosen to receive the Bulletin electronically. Any additional copies will be made available from the Librarian at a modest price - cost still to be determined.

News of Members

New Members

We extend a warm welcome to our new members and trust they will enjoy the benefits from their association with us:

Mr. Jeremy Griffiths: 32 Rickhayes, Wincanton, Somerset. BA9 9BJ
Mr. De Boever: Brielmolenstraat 103, 9160 Eksaerde. Belgium
Mr. Roger De Landsheer, 7 Rue Guido Oppenheim, 2263 Luxembourg
Mr. Rick Vanderknyff; 21402 NE 146th Place, Woodinville, Washington 98077

Addresses

Address change or correction. Amend to read –

U.S.A. - David Jarrett; e-mail 'david@sobenycptown.com'
- Vincent Sgier; e-mail: 'vsgier@cableone.net'
South Africa - Anton Kropman; P.O.Box 21556, Kloof Street, Cape Town, 8008
e-mail: anton-marc@discoverymail.co.za
Belgium - Theo Hordies; e-mail: 'theo.hordies@skynet.be'
- John Van Casteren; e-mail: 'vancasterenjohn@scarlet.be'
Denmark - Johan Jantzen; e-mail: 'jantzen@hum.aau.dk'
U.K. - Patrick Ellis; e-mail: 'pjce@btopenworld.com'

Ceased membership

The following have either retired as indicated, or ceased to renew their membership –

France - J-C. Porignon
Switzerland - R. Cucchiani
U.S.A. - Robert Wilson (retired)
- P. Cox
U.K. - T. Garcia (retired)
- W. Mawdesley (retired)
- A.J. Fowler

Minutes of the Belgian Congo Study Circle AGM, 16th April 2005



Back row – L. Achten, Th. Frennet, L. Van der Maercken, P. Lindekens, M. Oblin
Middle row – Y. Winand, M. Hopperets, C. Vandenbossche, M. Frevelhausen, E. Hoorens, C. Stockmans
Seated – C. Henuzet, R. Gallant, W. Deijnckens, L. Tavano, S. Smith

The Annual General Meeting was held at the Hotel Erasme, in Brussels on Saturday 16th April 2005. In attendance were Messrs: L.Achten, W.Deijnckens, Th.Frennet, M.Frevelshausen, R.Gallant, C.Henuzet, E.R.Hoorens, M.Hopperets, Ph.Lindekens, Dr.M.Oblin, S.S.Smith, C.Stockmans, L.Tavano, C.Vandenbossche, L. Van der Maercken and Y. Winand.

Apologies were received from B.Harris, H.Hoyte, C.Lloyd and A.MacLaren.

Minutes of the AGM 2004

The minutes of last years AGM as published in the Bulletin were approved.

Matters arising – (Re: *Cancellations of Normal Post offices etc. Heim-Keach*)

A reprint of the 3rd edition of ‘Cancellations of the Normal Post offices etc, *Heim & Keach*’ has been made. It will remain available to members under the same terms as previously - a modest €5 plus postage and distribution costs. Outside the Euro-zone the final delivered price will be determined by currency conversion rates and the add-on postage costs. Non-members will be charged a premium and consideration is being made to offer it for sale to the wider public, on E-Bay.

**Belgian members should contact - Walter Deijnckens or Philippe Lindekens,
U.S.A. members - Ed Lavitt,
U.K. and ‘Rest of the world’ - our Librarian, Allan MacLaren.**

General Secretary's report – (Michel Hopperets)

To enable the Study Circle to function well, it is important that the General or your local area Secretary be informed of any change in circumstance, postal or e-mail address. Each Bulletin carries the name and address of those officers.

Membership of the Circle is presently 120. (121 at 16th May 2003) and the distribution is shown below.

	2004	2005		2004	2005
Belgium	44	49	Germany	1	0
U.K.	29	25	Kenya	1	1
U.S.A.	29	30	New Zealand	1	0
Australia	1	0	Norway	0	1
Denmark	5	5	South Africa	1	1
France	2	2	Spain	1	1

Presidents Report – (Walter Deijnckens)

At this years A.G.M. in Brussels, there were no candidates for the position of President, and nobody present in the meeting was prepared to fill this vacancy. The President confirmed that he was prepared to help out and serve for another year, as it would be silly to have a Study Circle without a President. As the rotation of the Presidential seat is now completely broken, (historically U.K, Belgium and U.S.A. in turn for a two year period) It was suggested that nomination and appointment of this position be considered on an annual basis, as are all the other officer appointments.

I sincerely hope that all the other overseas members agree with this decision and for those who are active within the circle I hope they will continue in their support. However I would appreciate that some new or older members taking on a more active 'officer' role so that succession can be secured. We all are getting older and someday somebody should keep on the good work.

New publications of our members are still being introduced which in turn means that new findings on stamps and covers are being made. If I can help with any questions you may have, please do not hesitate to ask.

Treasurer's Report –(Stuart Smith)

The 'accounts' for the year ending 31 December 2004, as published in Bulletin 134 were approved. It was reported that the Study Circle has been granted a 5-year dispensation from the U.K. Inland Revenue office, removing the burden of making an annual 'Tax return' and permitting interest on bank savings to be paid gross. This became effective for 2005 and will be incorporated in the current years accounts.

The Treasurer reported that finances remain stable and with the exception of the proposal which follows*, it was recommended and accepted that the subscription levels remain as at present i.e.

U.K.	£8
Belgium	€10
Other European	€10
U.S.A.	\$15
Rest of the World*	£12 (or £8*, see below)

*As a number of 'Rest of the World' overseas members have chosen to receive their Bulletins and Auction lists electronically, direct from the Bulletin Editor - it was proposed and accepted that those taking this option will in future have their subscription brought in line with local U.K. members at £8. This will take effect as from 1st January 2006.

The Circle has a stock of books for sale valued at approximately £800. These are held by and in the safe keeping of the Librarian. Additionally there is an extensive library of books available on loan to members. The editor was requested to publish this list in the next Bulletin¹.

¹ Library books – refer pages 16-17

Auction Secretary – (Philippe Lindekens)

A comprehensive and detailed financial report of auction sales for 2004 was presented. The following is a summary:

Number of lots offered	855
Number of lots sold	676
Average number of buyers/sale	27
Total value sold	€54,605
Costs incurred	€242
Commission due to BCSC after the deduction of costs	€1183

It is the intention and anticipated that the present 4 auctions per year will continue during 2005 and 2006. It should be noted that most of the Keach collection is expected to have been disposed of during this period.

A request was made to continue with the present 'bank vault safe' facility. This is under consideration and if deemed beneficial will be maintained.

Payment for auctioned lots;

U.K. and Commonwealth members - will continue to receive their lots from Norman Clowes and payment should be made to him. Whilst bidding will be in Euros (€), UK and Commonwealth members will be invoiced in (£) pounds sterling and payment should be sent to N.Clowes, 20 Ogwen Drive, Lakeside, Cardiff. CF23 6LL

U.S.A. (payment in \$) – E.Lavitt, P.O.Box 900, Rockville, CT 06066

Belgium & all other European countries (payment in € Euros) – Ph.Lindekens, Rue des Trois Ponts 38, B-1160 Brussels

Expert Committee – (LeoTavano)

A valuable service continues to operate and a full report has been passed to the Treasurer for the period to April 2005. During the 12-month period May 2004 to April 2005, sixty certificates had been issued but only six members used the service.

N.B. Members are entitled to 2 free certificates per year but members must pay postage. A reduction of 20% on the total fees (except postage) will be given for 10 certificates or more per sending.

Librarian – (Allan MacLaren)

Whilst the Circle offers a library facility it is noted that it is little used by members. The library is a lifetime assembly and was donated by Ray Keach to the Circle. Not only are these books available on loan for a small fee to cover postage etc. but also copies of articles published in all previous Bulletins can be obtained from the Librarian on request and at a nominal charge.

Members are reminded that there is an index (Index to Bulletins 1-114, compiled by Norman Clowes) and a further edition (Bulletins 1 – 133) presently being compiled. The Index covers every subject published in the Bulletin and for those desirous of finding information on matters relating to their own specific interests, it is quite likely that such subject matter can be found in a back copy of the Bulletin.

New members are reminded that the Librarian also has a number of books available for sale. Details are contained in this Bulletin.

Packet Secretary (U.K.) – (Hal Hoyte)

Hal Hoyte reported that the Packet 'continues to do well, so well in fact that the one for 2004 had to be withdrawn with five members still to receive it. It had already sold 67% of its value and it was considered unfair to those about to receive empty or half-empty booklets and paying postage. It was therefore withdrawn, refilled and is back in circulation once again (2005) '.

Of the initial 2004 Packet, the details are as follows:

Total value before sales	£326.09	
Sales	£213.78	(% Sales/Total 66.7%)

'We still have some stock left of the duplicates in the estates of deceased members but all good things come to an end so I urge all members, including those who do not take the packet, to root around and make up a booklet or two for the packet. Covers, cards and postal stationery can be priced in pencil individually and put in a booklet-sized envelope (20x13cm). If you have any queries please contact me.' (Refer to 'Regional addresses' on page 7)

Packet Secretary Belgium - (Charles Henuzet)

Two new booklets are in the course of preparation.

The total commissions previously raised for the Study Circle was about €70. This sum in itself is of little relevance, there being many stamps of little value, it represents a large number of sales.

Members wishing to be included on the distribution list or contributing to future booklets are invited to contact Charles Henuzet.

Bulletin Editor – (Stuart Smith)

It was confirmed that the Bulletin is now available electronically, to any member wishing to receive it.

A few 'Rest of the World' members are already taking it this way. (Refer 'Treasurer's report')

For down loading purposes it should be noted that the original prepared article will be about 3.5MBytes in size. It is also available in an Adobe pdf file format at about 2.7MB's or alternatively 700KB. ('Illustration' quality is impaired at the 700KB level)

Officers of the Study Circle

The following were elected: -

President	<i>Walter Deynckens</i>
International General Secretary	<i>M.Hopperets</i>
Regional Sec. – Belgium	<i>E.R.Hoorens</i>
Regional Sec. – USA	<i>D.A.Schaubroeck</i>
Regional Sec. – UK + rest of world	<i>S.S.Smith</i>
Bulletin Editor	<i>S.S.Smith</i>
Auction Secretary	<i>Ph.Lindekens/ C.Stockmans</i>
Librarian/Book sales	<i>A.J.D.MacLaren</i>
Packet Sec. – UK	<i>W.H.Hoyte</i>
Packet Sec. – Belgium	<i>C.Henuzet</i>
Chairman Expert Comm.	<i>L.Tavano</i>

Future Meetings:

1. The next General and AGM meetings will again be held at the Erasme Hotel, B-1070, Brussels on Saturday 22 April 2006. Overseas members who want to join in will find that the hotel is very conveniently situated and provides excellent service at reasonable prices.

2. Belgica 2006 – Brussels 16-20 November

Any other business

In the absence of any matters being raised, the President closed the meeting by "thanking our new General Secretary Michel Hopperets, the regional secretaries, treasurers, distributors, packet secretaries, expert committee and of course the auctioneers Philippe Lindekens and Charles Stockmans." He added "The Belgian Congo Study Circle is still a highly qualified Study Circle where a lot is learnt and found. I therefore hope sincerely you will all renew your membership and stay with us for another year. Any suggestions are welcome but keep in mind a personal contribution to the Bulletin is always much appreciated."

Stuart Smith

Following the morning's formal proceedings and a pleasant lunch break, several members presented displays. We are grateful to the following for their contributions and Emile Hoorens who once again arranged the very successful venue.



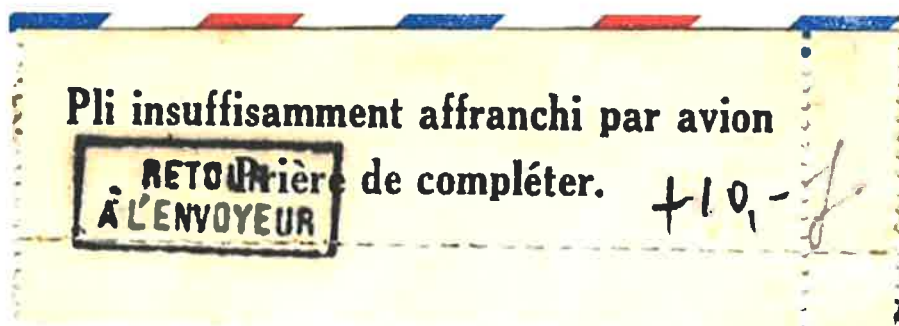
- | | |
|--|---------------|
| <i>Watermarks on the 3,50fr and 10fr Mols</i> | C. Henuzet |
| <i>Stockhausen's Expedition to determine the East Congo borders.</i> | E.R.Hoorens |
| <i>Postal History of Ruanda-Urundi</i> | W. Deijnckens |
| <i>Plate combinations of the 1fr Mols Elephant issues.</i> | L.Tavano |
| <i>A detailed history of the 5 centimes Mols</i> | C. Henuzet |
| <i>Airmail post from 1920 to 1933</i> | E.R.Hoorens. |

X-X-X-X-X-X-X-X-X-X-X-X

Subscription payments and other useful addresses

Belgium	U.K. & Rest of World	U.S.A
<i>Sec., Treasurer, Bulletin Distributor</i> Emile R. Hoorens Ave., Eugène Ysaye, 105/1 1070 Brussels.	<i>Secretary & Treasurer</i> Stuart S. Smith Lychgates, Pinfold Hill, Curbar-Calver, Hope Valley. S32 3YL	<i>Secretary & Treasurer</i> David A. Schaubroeck 4515 SE Peachwood Terrace Stuart, Florida 34997
<i>Expert Committee Chairman</i> Leo Tavano Rue Wazon 26, 4000 Liège.	<i>Packet Secretary</i> W. Hal Hoyte 104 Willow Street, Oswestry, Shropshire Shropshire. SY11 1AL	<i>Bulletin Distributor</i> Edwin M. Lavitt P.O.Box 900, Rockville, CT 0607
<i>Packet Secretary</i> Charles Henuzet Place St.Roch 30, 5620 Saint Aubin.	<i>Bulletin Distributor</i> Norman Clowes 20 Ogwen Drive Lakeside, Cardiff. CF23 6LL	

Insufficiently Paid
- Philippe Lindekens



Illustrated above is a curiously gummed tape that I have only seen once. It was applied on the 'insufficiently paid' cover below, and sent from Leopoldville to Geneva, New York, USA. It bears an un-cancelled 50c. Olive-brown Mask 1947 issue, and was returned to the sender stating -

Pli insuffisamment affranchi par avion
Prière de compléter.

('Insufficiently franked for airmail/Please complete')

There is an additional manuscript '+10.-' and a framed 'RETOUR À L'ENVOYEUR' (return to the sender) - 11 x 27mm in black

Tape's characteristics:

Dimensions excluding the perforated selvedge - 22 x 81mm

Vertical perforation - 11

Horizontal perforation - roulette type

It appears to have been cut across the top.

Postage rate:

50c. Mask + manuscript '+10F' = 10.50 Fr.

Until 14 February 1949 - 3.50fr + 7fr (10.50 fr) was the normal 5gr airmail letter rate to U.S.A.



Question

Has any other member seen another example of this tape? If so, please contact Philippe and if possible let him have a copy.

Foreign Censor Marks – continued

Gold Coast

By – Walter Deijnckens

Preface

As previously acknowledged a large quantity of material has been submitted for examination and the author has formally documented each item of mail and its postal history. However, from an editorial perspective that total compilation doesn't make for 'easy reading', and at Walter Deijnckens suggestion, the format of this evolving article will now change. With a few exceptions, and as far as possible, the results will be summarised and presented in tabulated format.



Five 'PASSED BY CENSOR' 'hand stamps' of the type illustrated below have been recorded; these are identified by the following numerals – 7, 8, 10, 19 and 23. Both blue and red inks have been used - undoubtedly other numerals will exist.

By way of formalising the results of my research the following table summarises what we currently know.



Passed by Censor 7

No.7 Applied in Accra

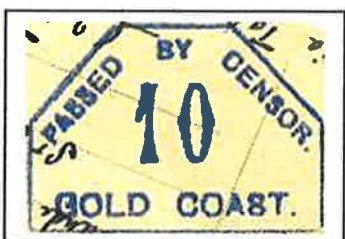
Covers examined: 6
Mail originating from: Leopoldville,
Costermansville, Usumbura, Matadi and Poko.
Addressed to: U.K., and U.S.A.
Earliest recorded: 8 May 1941
Latest recorded: 28 July 1941



Passed by Censor 8

No.8 Applied in Accra

Covers examined: 6
Mail originating from: Kindu, Stanleyville,
Lisal, and Leopoldville.
Addressed to: U.K., and U.S.A.
Earliest recorded: 16 May 1941
Latest recorded: 17 November 1941



Passed by Censor 10



Passed by Censor 10

No. 10 Applied in Accra

Covers examined: 5
Mail originating from: Leopoldville, Nizi and Stanleyville.
Addressed to: U.K.
Earliest recorded: 4 August 1941
Latest recorded: 6 August 1942



Passed by Censor 19

No.19 Applied in Accra

Information recorded by Jean Oth -
'Le Congo Belge en 1940 - 1945'.



Passed by Censor 23

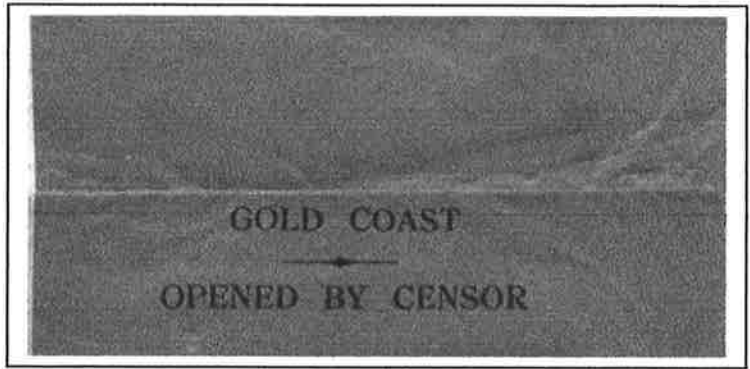
No.23 Applied in Accra

Covers examined: 1
Addressed to: U.K.
Recorded: 9 June 1942

Labels - 'OPENED BY CENSOR' and 'EXAMINER'

In addition to the stamps listed above, there also exist 'Opened by CENSOR' and 'Opened by EXAMINER' sealing labels. Examples are illustrated below.

The **'OPENED BY CENSOR'** label exists in both *'Red'* and *'White or other pale shade'*

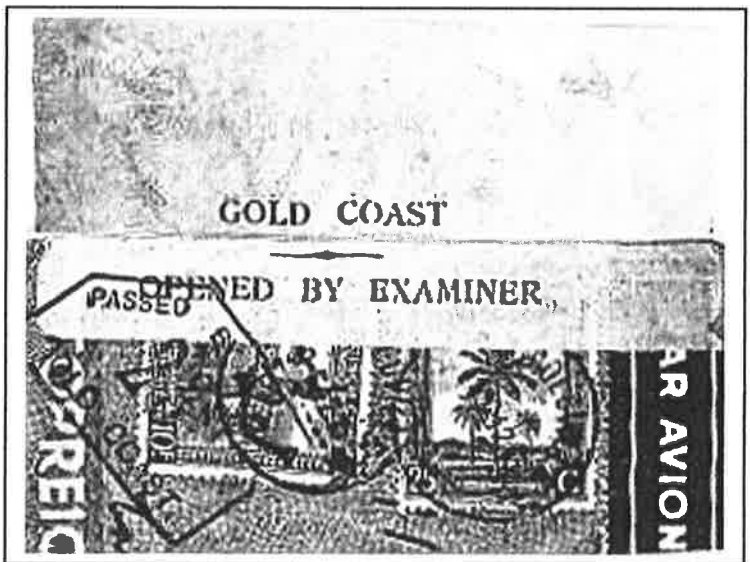


The colour of the **'OPENED BY EXAMINER'** label appears *'off-white'*.

N.B. 'Off white' is an imaginary description pending confirmation.

The example illustrated is a black and white photocopy without declaration of the colour.

Of the examples seen, in only one case is it tied by a 'Passed by Censor' numerical 'hand stamp'. Illustrated here



X-X-X-X-X-X-X-X-X-X-X-X-X-X-X-X

Postmark enquiry ?

Andrew Ramsey has sent the accompanying illustration that appears to be 'Albertville 12B 'M' (*Heim/Keach*). If it is, then the 'M' has not previously been recorded.

Just possibly it could be a smudged 'H' but the enlargement does seem to confirm the 'M'.

Would 'postmark collectors' care to verify this apparently new find?



Use of the 'griffe'- straight-line mark LEOPOLDVILLE

By – Philippe Lindekens

This article concerns the 'straight-line mark' LEOPOLDVILLE, measuring 7 x 49mm and classified by Heim and Keach as type 2A1. Prior to 1900 the ink used is usually blue and later black.

Leopoldville, in common with some other offices, had at its disposal a 'straight line canceller' or *Griffe*. This was used as a canceller on mail and other postal and revenue items, in special circumstances.

It was typically applied on communications passing through the Leopoldville office where the postage stamps were -

- not previously cancelled (Figure 1)
- incompletely cancelled (Figure 2)
- cancelled incorrectly (Figure 3)

The Leopoldville straight-line 'griffe' was also used as a precursor to the instructional '*Cartes Postale Incomplète*' overprint. It was applied to confirm to the addressee that the card had been validly received in Leopoldville in the absence of the other portion (*Demande* or *Réponse*) – verifying that the apparently missing half had not been stolen during its travels. Use of the Leopoldville griffe + manuscript '*carte incomplète*' with initialled signature are illustrated in figure 4.

Use of the 'straight-line mark' to cancel Independent State stamps used on 'Mail delivery Assignment forms' is uncommon (Figure 5a and 5b). I have seen only one example and am unable therefore to say if it was a normal or exceptional application. The known 'delivery assignments' between 1915 and 1922 have their stamps cancelled by the dated post office circular canceller and not the 'griffe'.

Stamps not cancelled at the despatch office (*in Belgium*)



Figure 1.

15c. Postal stationery 'Reply card' from Bruxelles (Nord) – dated 1st August 1904 and addressed to Eala, Congo; transits Leopoldville 27th August and Coquilhatville September 13th, 1904. The original Belgian cancel has been positioned badly and therefore failed to annul the cards stamp. The Leopoldville post office placed its 'griffe' over the stamp and date cancelled the entire, in conformance with the postal decree.

Stamps not cancelled at the despatch office (*in the Congo*)



Figure 2.

10c. Postal stationery card with additional 5c. green from Stanleyville 4th January 1904 to Namur, Belgium where it arrived 7th March. It bears a Leopoldville circular transit, 26th January and 'straight-line mark' over the stamp not previously cancelled. The Namur receiving office applied its mark, 'à cheval' across the two stamps.

Stamp cancelled in a 'non-conforming' manner



Figure 3a.

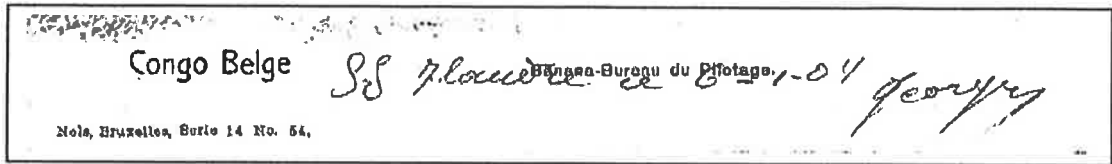


Figure 3b.

Figures 3a and 3b are illustrations from a picture postcard posted aboard the river steamship s/s Flandre on 6th January 1904 and given the telegraphic office cancel of Irebu, 8th January. The card started its journey again from Irebu to Brussels on 20th January, confirmed and endorsed once again by the Irebu telegraphic canceller. Leopoldville's transit post office applied its 'straight-line mark' over the stamp, undoubtedly signifying the postcard's entry into the postal network. Here the office forgot to apply its date cancel on the card.



Another example of a stamp with the same marks but cancelled at Irebu 7th January 1904. It probably arrived in Leopoldville on the same date as the postcard described above.

'LEOPOLDVILLE' as a precursor of the 'Cartes Postales Incomplète'



Figure 4.

15c. 'Reply Card'. from Leopoldville 9th August 1898 to Lessines in Belgium. It arrived 14th September and bears a Boma transit, 16th August. Straight-line mark LEOPOLDVILLE in blue (same colour as the date cancel on the stamp) and initialled manuscript 'carte incomplète'.

Mail delivery 'Assignment Instruction'



Figure 5a

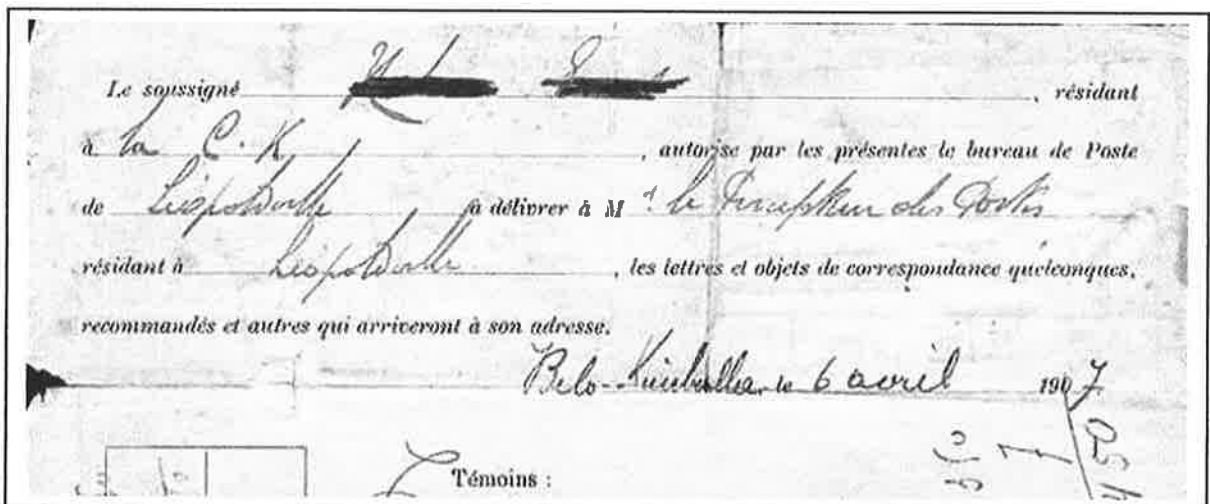


Figure 5b

Assignment made at Bilo Kimballa 6th April 1907 authorizing the '*Le Perception des Postes*' in Leopoldville to receive the addressee's mail. Stamps totalling 1.50 fr have been cancelled by the straight-line mark. (A 50c stamp is probably missing because the later authorisations were taxed at 2fr). The use of the straight-line mark could be justified because the 'assignment' was not made at Leopoldville.



Library

All books and publications are available
on loan from the Librarian.
There is a nominal borrowing fee +
postage

Adair/Mallet-Veale	The Belgian Congo – various
Armstrong	1926 The Romance of The Air Post. An Introduction to Air Post Collecting
Baldwin	1932 The Airmails of British Africa 1924-1932
Baldwin	1950 Imperial Airways. A History and Priced Check List of the Empire Air Mails
Burniat	Vade Mecum – Du Collectionneur de Timbres Poste de Belge & Colonies
Celis	1997 Deutsch Ostafrika R-U, Burundi & Rwanda. P.O.s & Cancellations 1902-1996
Celis	1981 La Philatelie de Transition du Congo Belge au Congo du Ruanda-Urundi
Celis	Rwanda – Obliterations et Cachets de 1962 a 1994
Crustin	Etat Independant du Congo – Le timbre a 5Fr. de 1894
Crustin	1944 Etat Independant du Congo – Le timbre a 1Fr. de 1894
Daugimont	1957 Aperçu Historique de la Poste Aérienne Jusqu'en 1935
de Cock	1931 Le Congo Belge et ses Marques Postales
Deneumostier	1981 Anvers-Congo ou la Grande Aventure
Deneumostier	1988 Documents de l'Histoire du Congo Prec. & Prem. Emission 1883-1900
Deneumostier	1986 Etat Independant du Congo. Les Premiers Valeurs Postales
Deneumostier	1986 Etat Independant du Congo – Emission Dite de 1887
Deneumostier	1980 Les Entiers Postaux Sous Le Règne de Léopold II Tome 2
Du Four	Balasse Magazine. Extracts from Nos. 8,9,10,11 & 12. (Issues 1894-1923)
Frenay	1989 Etude du 5 Centimes Mols, 1894-1909
Frenay	1993 Etude du 10 Centimes Mols. 1894-1909
Frenay	1992 Etude du 15 Centimes Mols. 1896-1909
Frenay	1989 Etude du 40 Centimes Mols. 1898-1909
Frenay	1990 Etude du 50 Centimes Mols. 1894-1909
Frenay	1994 Etude du 1 Franc Mols. 1894-1909
Frenay	1988 Etude du 3.50 Francs Mols. 1898-1909
Frenay	1989 Etude du 5 Francs Mols. 1898-1909
Frenay	1990 Etude du 10 Francs Mols. 1898-1909
Frenay	Les Postes Civiles pendant la guerre de 1914-1918
Frenay	Les Timbres – Taxe du Congo 1886-1960
Frenay	1991 Histoire Postale de l'Etat Independant du Congo
Gailly	1925 Le Negro Guide
Gailly	1945 Le Negro Guide
Gallant/Huyghebaert	Histoire du Service Postal au Congo Belge (1886-1960) Tome II
Grubben	1983 Catalogue Illustre Essais des Timbres de Belgique et Congo Belge
Gudenkauf	1974 Les Timbres du Congo. Surcharges à Boma en 1922-1923
Gudenkauf	1982 Mailboat Services from Europe to the Belgian Congo 1879-1922
Gudenkauf	1985 Mailboat Steamers on Congo Rivers and Lakes 1896-1940
Gudenkauf	Postal History of the Lado Enclave
Heim/Keach	2004 Cancellations of the Normal P.Os of B.C. 1886-1960 & R.U. 1917-1962 - 3 rd Edition
Henin	1961 L'épopée de l'aire au Congo
Hoorens	1997 Histoire Postale de l'Etat du Katanga

Library continued

- | | | |
|--------------------------|------|--|
| Ingles | 1977 | Les Surcharges Congo Belge 1909 |
| Jeukens | | La Censure au Congo Belge (Civile et Militaire) Guerre 1939-45 |
| Joncker | 1947 | Les Dix Francs Verts du Congo |
| Keach | 1976 | A Philatelic Bibliography of Belgian Congo & Ruanda Urundi |
| Robson Lowe | | The Harrison's of Waterlow's |
| Mackay | 1971 | Airmails 1870-1970 |
| Mallet-Veale | 1928 | The Stamps of the Belgian Congo and Belgian East Africa |
| Muller | 1933 | Catalogue Des Etiquettes Aeropostales |
| Oth | 1992 | Le Congo Belge en 1940-45 |
| Pennycuik | 1967 | The War in East Africa 1914-18 |
| Robson Low | 1968 | Specimen Sample Stamps. Price list |
| Soeteman | 1995 | Reflets de la Philatélie en Belgique et au Congo Belge |
| Stibbe | 1986 | Les Entiers Postaux du Congo et Ruanda-Urundi. Edition 1986 |
| Stiedl/Billig | 1937 | Belgisch-Kongo. Liefrung No.41 with English translation |
| Stockmans/Gallant | 1999 | Mailboat Services Antwerp-Congo |
| Stockmans/Gallant | 1999 | Transport Postal Maritime – Anvers-Congo |
| Stockmans/Gallant | 1997 | Arrêtes et Ordonnances Concernant le Service Colis Postaux 1886-1962 |
| Stockmans/Gallant | 1997 | Arrêtes et Ordonnances Concernant les Tarifs Postaux 1886-1962 |
| Stockmans/Gallant | 1999 | Service des Postes du Ruanda-Urundi Rapports Annuels 1921-1960 |
| Stockmans/Gallant | 1998 | Services des Postes – Rapports annuels 1908-1958 |
| Studiegroep Vervalsingen | | EIC Le 5 Centimes de 1886 – Authentique et Faux |
| Studiegroep Vervalsingen | | EIC Les 10-25 & 50 Centimes de 1886 – Authentique et Faux |
| Studiegroep Vervalsingen | | EIC Le 5 Francs de 1886 |
| Tavano | 1999 | Congo et Congo Belge 1894-1923. Etude du 10c – Stanley Falls |
| Tavano | 2000 | Etude du 5 Francs Chef Bangala et 5 Francs Ochre 1915 |
| Tavano | 2002 | Congo Belge Emissions 'Mols-Van Engelen, 1910 et Récupération' 1921' |
| Tavano | 2002 | Afrique Oriental Allemande – Occupation Belge 1916-1922, Emission Londres' |
| Tavano | 2004 | Congo belge – 1909. Emission Mols-van Engelen ' Le secret des PRINCES' |
| Vandenbauw | 1982 | Catalogue de l'Aerophilatelie Belge |
| Vanderveken | 1996 | Art Indigène du Congo Belge et du Ruanda Urundi |
| Waterlow & Sons | 1950 | The Printing of Value Papers |

Various

- | | |
|------|---|
| 1923 | The Belgian Congo and Belgian East Africa |
| 1897 | Traite de Géographie du Congo |
| 1920 | La Télégraphie sans Fil au Congo Belge |
| 1925 | Catalogue Illustre des Timbres du Congo Belge |
| | Catalogue Illustre des Timbres Poste de la Belgique et du Congo Belge |
| | Catalogue-Album des Valeurs Postales Emises 1885-1962. Vol.2 |
| | Congo Belge Législation Postale 1948 |
| 1955 | Le Liaison Aériennes – Entre la Belgique et la Congo Belgique |
| 1957 | Divisions Territoriales de la Colonie et liste des localités du Congo Belge |
| | Les Entiers Postaux de Belgique, Congo Belge et Luxembourg |
| 1960 | Répertoire Des Villes et Principales Localités du Congo |

Librarian

Allan J.D. MacLaren
'Moray', 43 Millar Street,
Carnoustie. DD7 7AT
Scotland
e-mail: allanjdmaclaren@blueyonder.co.uk

**Liste des Livres et Brochures Disponibles.
Lijst van de Beschikbare Boeken en Brochures.
Books and Brochures available**

- | | | |
|---|-----------|--------|
| 1. Histoire du Service Postal au Congo Belge (1886-1960) | | |
| Tome I (enkel in het Frans) | 550 pages | €65 |
| Tome II : Les valeurs postales | 130 pages | €30 |
| 2. Arrêtés et Ordonnances concernant les Tarifs postaux
au Congo Belge et au Ruanda-Urundi 1 janvier 1886 – 30 juin 1962 | | |
| - Service postal intérieur et international | | |
| - Service postal aérien | 124 pages | €15 |
| 3. Colis Postaux Ordinaires.
Colis Postaux par Avion | | |
| | 128 pages | €15 |
| 4. Législation Postale | | |
| | 214 pages | €20 |
| 5. Instruction Générale
Premier Tome : attributions de la Poste,
Exécution du service, etc. | | |
| | 65 pages | €8,75 |
| 6. Transport Postal Maritime, Anvers – Congo | | |
| | 58 pages | €10 |
| 7. Rapports Annuels du Congo Belge et du Ruanda-Urundi | | |
| | 153 pages | €20 |
| 8. Rapports Annuels du Ruanda-Urundi | | |
| | 45 pages | €7,50 |
| 9. Arrêtés et Ordonnances concernant les Tarifs
Postaux au Congo Belge et au R.U. 1 jan. – 30 juin 1962. | | |
| - Service postal intérieur et international | | |
| - Service postal aérien | | |
| - Service des petits paquets | | |
| - Service des colis postaux par voie ordinaire | | |
| - Service des colis postaux par voie aérienne | 305 pages | €30 |
| <i>(Les numéros 2 et 3 en un seul volume)</i> | | |
| 10. Carte Administrative du Congo, situation au 30.06.1960
avec la liste de 2500 localités. | | |
| | | €12,50 |

Toute cette documentation existe également en néerlandais et le n°6 également en anglais.

All publications are available both in French and Dutch. No 6 is also available in English.

*Ces montants seront augmentés de frais de transport et d'emballage.
Deze bedragen worden verhoogd met de kosten voor verpakking en verzending.*

***Postage extra for despatch to the U.K. N°1** Tome I at €15
Tome II at €10
Tome I & Tome II at €25

Roger GALLANT
Sylvain Dupuislaan 306 bus 5
1070 BRUSSEL. (Anderlecht)
Tél. 02 569 55 08
roger.gallant@skynet.be

**POSTAL AUCTION SALE BCSC 2005-2
REALISED PRICES**

lot	price	lot	price	lot	price	lot	price
1	100.00	51	19.50	101	0.00	151	5.50
2	31.00	52	0.00	102	0.00	152	4.25
3	10.50	53	0.00	103	0.00	153	4.25
4	45.00	54	0.00	104	0.00	154	4.25
5	50.00	55	7.50	105	0.00	155	0.00
6	41.00	56	10.00	106	0.00	156	20.00
7	27.00	57	0.00	107	0.00	157	39.00
8	0.00	58	0.00	108	0.00	158	36.00
9	35.00	59	36.00	109	0.00	159	18.50
10	31.00	60	0.00	110	3.25	160	10.50
11	600.00	61	12.00	111	0.00	161	6.50
12	18.50	62	0.00	112	33.00	162	3.75
13	70.00	63	7.00	113	3.25	163	4.25
14	222.00	64	0.00	114	30.00	164	4.25
15	36.00	65	20.00	115	27.00	165	3.75
16	0.00	66	0.00	116	43.00	166	26.00
17	15.00	67	0.00	117	20.00	167	3.25
18	248.00	68	0.00	118	0.00	168	4.75
19	355.00	69	0.00	119	0.00	169	1.00
20	380.00	70	38.00	120	6.50	170	0.00
21	8.00	71	60.00	121	35.00	171	0.00
22	36.00	72	20.00	122	0.00	172	0.00
23	64.00	73	1.00	123	0.00	173	0.00
24	70.00	74	0.00	124	15.50	174	0.00
25	122.00	75	20.00	125	1.00	175	0.00
26	10.00	76	0.00	126	2.00	176	0.00
27	9.50	77	0.00	127	1.00	177	4.25
28	21.50	78	0.00	128	8.00	178	1.25
29	8.50	79	0.00	129	6.50	179	5.00
30	5.75	80	3.25	130	11.50	180	1.75
31	8.50	81	60.00	131	10.50	181	4.25
32	6.00	82	5.50	132	10.00	182	5.00
33	20.00	83	0.00	133	10.00	183	0.00
34	4.25	84	0.00	134	10.00	184	0.00
35	4.25	85	26.00	135	0.00		
36	6.50	86	0.00	136	0.00		
37	15.00	87	0.00	137	0.00		
38	6.00	88	0.00	138	29.00		
39	1.00	89	0.00	139	25.00		
40	75.00	90	0.00	140	0.00		
41	85.00	91	0.00	141	33.00		
42	0.00	92	0.00	142	26.00		
43	0.00	93	0.00	143	26.00		
44	0.00	94	0.00	144	26.00		
45	0.00	95	0.00	145	6.50		
46	0.00	96	0.00	146	6.50		
47	20.50	97	0.00	147	21.50		
48	57.00	98	0.00	148	3.25		
49	23.00	99	0.00	149	0.00		
50	41.00	100	0.00	150	5.50		

BELGIAN CONGO STUDY CIRCLE
POSTAL AUCTION SALE 2005(3)

		Bids to be received not later than <u>September 30th , 2005</u>			
		to Ph. LINDEKENS, rue des Trois Ponts, 38 - B 1160 Brussels Belgium / Europe			
		or by E-mail at <lindemens.bogaerts@skynet.be>			
		ALL PRICES in EUROS			
LOT	COB	DESCRIPTION	COB	Min. BID	
Leopold II - 1887 issues					
1	6	5c green Leopold II issue used with Switzerland transit cancellation - scarce		5.00	
2	12	5 fr grey Leopold II issue, used Boma April 13th, 1893 - fine	110.00	11.00	
3	13A/B	25Fr + 50 Fr grey not issued 1887 Leopold-II, LH	60.00	12.00	
Congo Free State - Mols issues					
4	17	10c. Mols 1894 issue - red-brown I1+A2 - bottom left corner block of 4 with both selvages - perf 14,5 - 2 UM / 2 LH	92.00	23.00	
5	18	10c Mols 1894 issue - blue-green - "Japanese" crude forgery - used - scarce		10.00	
6	19	10c Mols 1894 issue - carmine with griffe "T" and straight line "MATADI" (see Du Four book page 399 - §4) - normally without gum		10.00	
7	20	15c. Mols 1894 issue - yellow-ochre - I+A1 - block of 4 with top selvedge - perf 14 - 1 UM / 3LH	20.50	4.00	
8	21	25c. Mols 1894 issue - dull orange - block of 4 - perf 15 - 4 LH	18.00	5.00	
9	24	50c. Mols 1894 issue - blue-green (1st type) - block of 4 - perf 15 - 4 LH	7.00	3.00	
10	24	50c. Mols 1894 issue - yellow-green (2nd type) - block of 4 with left selvege - perf 13,5 - 1 LH / 3 UM	10.00	2.00	
11	24	50c Mols 1894 issue - green - "Japanese" crude forgery - used - scarce		10.00	
12	25a	50c. Mols 1894 issue - yellow olive -top selvedge - UM - scarce item		12.00	
13	26B	1 fr Lilac Mols 1894 issue with left selvedge, perf 15, LH/OG	370.00	74.00	
14	27	3,50 fr imperforate Publicity proof blue frame + violet centre on thick paper - some rust stains on top margin - scarce		100.00	
15	29	10 fr imperforate Publicity proof dark green frame + black centre on thick paper - 1 rust stain on top margin - scarce		125.00	
16	29	10 fr imperforate Publicity proof dark green frame + black centre with oblique small overprint "Waterlow & Sons LTD SPECIMEN" - scarce		150.00	
17	29	10 fr green perf 14 Mols 1894 issue - off centre, LH	125.00	15.00	
18	29 b	10 fr green perf 12x14 Mols 1984 issue used Boma Oct 15th, 1907 - small thinning on face, in the centre	435.00	40.00	
19	29a	10 fr green perf 12 Mols 1894 issue - LH - 2 small rust stains	720.00	72.00	
20	1897	5c, Mols 1894 issue red brown (5x) on small cover from Matadi June 24th, 1897 to Haut Congo (internal mail); backstamped Léopoldville (July 5th) - Keach note "it would appear that the writer did not know that the internal letter rate had been reduced from 25 to 15c, sixteen months previously" - opened out at right - unusual.		50.00	
21	1898	5c red brown Mols 1894 issue on postal stationery Stibbe #14 from Matadi Nov 19th, 1898 to St Gall / Switzerland ; transits at Boma, Anvers and St Gall - no text but very fine		20.00	
22	1899	10c blue + 15c ochre + 25c orange Mols 1894 issue on picture postcard from Matadi May 12th, 1899 to Belgium ; transits at Boma, Lisbon and Binche - (picture postcard rate before May 1902 = 50c.) - scarce franking - colour picture of King Leopold II		75.00	
23	1900	5c, red brown + 10c, blue Mols 1894 issue on small cover from Boma May 9th, 1900 to Matadi (internal letter rate = 15c.); backstamped Matadi May 10th - addressee = Foulon		50.00	
Belgian Congo 1909 - Brussels overprint					
24	35 B1	50c. Olive with CB Brussels B1 overprint, LH	32.50	7.00	
25	35 B5	50c. Olive with CB Brussels B5 overprint, LH/OG	32.50	5.00	
26	35 B2	50c. Olive with CB Brussels B2 overprint, mint without gum	32.50	3.00	
27	37 B2	3,50 Fr vermillon with CB Brussels B2 overprint, LH, off-centred	320.00	60.00	

BELGIAN CONGO STUDY CIRCLE
POSTAL AUCTION SALE 2005(3)

LOT	COB	DESCRIPTION	COB	Min. BID
Belgian Congo 1909 - Local overprint				
28	30 L5	5c green with CB Local L5 overprint - OG	3.75	0.50
29	30 L7	5c green with CB Local L7 overprint + framed TAXE - LH - one rust stain on one perf	3.75	0.50
30	31 L2	10c carmine with CB Local L2 overprint - LH	3.75	1.25
31	31 L4	10c carmine with CB Local L4 overprint - LH	3.75	1.25
32	31 L5	10c carmine with CB Local L5 overprint - LH	3.75	1.25
33	32 L4	15 ochre CB Local L4 OBLIQUE overprint - horizontal pair - 2 LH		5.00
34	32 L4	15 ochre CB Local L4 overprint - used Boma March 1st, 19??	4.25	1.25
35	32 L7	15 ochre CB Local L7 overprint on I+A1b - used Pania-Mutombo 1910		4.00
36	33 L4	25c blue type I CB Local L4 DOUBLE overprint - used Boma Sept 6th, 1909		4.00
37	33 L5	25c blue type I with CB Local L5 overprint - LH	12.00	3.00
38	33 L6	25c blue type I with CB Local L6 overprint - mint without gum	12.00	2.00
39	33a L2	25c blue type II (re-engraved) with CB Local L2 overprint - LH	22.00	6.00
40	34 L2	40c blue-green with CB violet Local L2 overprint - LH	12.00	3.00
41	35 L1	50c olive with CB Local L1 overprint - OG	5.50	1.00
42	35 L5	50c olive with CB Local L5 overprint - mint without gum	5.50	1.00
43	36 L5	1 fr carmine with CB violet Local L5 overprint - perf 15,7 - LH (paraffine) - scarce	55.00	25.00
44	36 L5	1 fr carmine with CB violet Local L5 overprint - perf 14 - misplaced at the top "à cheval" - LH (black paper from album attached to gum) - scarce	55.00	12.50
45	36 L6	1 fr carmine with CB Local L6 overprint - LH	55.00	20.00
46	37 L1	3,50 fr vermillon with CB Local L1 - block of 4 - 4 LH	1320.00	330.00
47	37 L6	3,50 fr vermillon with CB Local L6 (2nd state) overprint + framed TAXES type IX - UM but probably regummed - scarce	330.00	60.00
48	38 L1	5fr Rose-carmine with CB Local L1 overprint - LH - perf 15	110.00	25.00
49	38 L5	5fr deep carmine with CB Local L5 overprint - perf 14,5 - used Dima	60.00	18.00
50	39 L1	10fr green perf 12 with CB Local L1 overprint - used E'ville 1912 - beautiful	69.00	20.00

Belgian Congo 1909 - Typographic overprint

50	TX7/TX16	complete set of 10 with typo CB overprints and with different TAXES - LH/OG - 1Fr poor gum / 25c type II - fine	750.00	75.00
51	TX 12	50c, olive CB typo overprint "à cheval", framed taxes type IX, used Lukafu 1909	4.25	1.50
52	40	5c green CB typo T1 overprint - LH	7.00	1.50
53	40	5c green CB typo large T2 overprint - LH	10.50	3.00
54	40	5c green CB typo overprint - block of 4 with left selvages - 2UM / 2LH	59.00	12.50
55	40	5c green CB typo T1 overprint - used Boma April 27th, 19?? - scarce	20.00	6.00
56	40	5c green CB typo T1 overprint - 3x - overprint varieties (damaged E, G, C - sheet pos 32 - 35 - 44) 2 LH / 1 mint without gum	21.00	3.00
57	41	10c carmine CB typo T1 overprint - 4x - overprint varieties (damaged E, G, C & C - sheet pos 32 - 35 - 36 - 44) - 4 LH	50.00	8.00
58	41	10c carmine CB typo T1 overprint - used Matadi April 14th, 1909 - scarce	20.00	6.00
59	41	10c carmine CB typo overprint - bottom right corner block of 4 with all selvages - 2UM / 2LH	95.00	20.00
60	42	15c ochre CB typo T1 overprint - 4x - overprint varieties (damaged C, C, G & E sheet pos 7 - 11 - 16 - 19) - 4 used	28.00	6.00
61	42	15c ochre CB typo overprint - bottom right corner block of 4 with all selvages and sheet number 450 2UM / 2LH	59.00	12.50
62	42	15c ochre CB typo T1 overprint - horizontal pair - overprint varieties (left stamp N°22 with broken B) 2 LH	14.00	3.00
63	43-Cu	25c blue type II CB typo DOUBLE overprint - LH	250.00	100.00
64	43	25c blue type II CB typo overprint - block of 4 with left selvedge - 4 LH	14.00	3.00
65	43-43a	25c blue type I & II CB typo overprint - 2 used vertical pair of both types	20.00	4.00
66	43	25c blue type II CB typo T1 overprint - 3x - overprint varieties (damaged E, G & C sheet pos 32 - 35 - 44) - 3 used	7.50	1.50
67	43a	25c blue type I CB typo T1 overprint - 2x - overprint varieties (damaged E, G sheet pos 32 - 35) - 2 used	15.00	3.00
68	44	40c blue-green CB typo overprint - block of 4 - 4 LH	10.00	2.50
69	44	40c blue-green CB typo T1 overprint - 3x - overprint varieties (damaged B, E, C sheet pos 22 - 32 - 44) - 3 used	7.50	1.50
70	44	40c blue-green CB typo overprint - block of 4 with left selvages - 4 used - scarce	10.00	5.00
71	45	50c olive CB typo overprint - "A CHEVAL" - misplaced on perforations - used		5.00
72	45	50c olive CB typo T1 overprint - 3x - overprint varieties (damaged G, C & C - sheet pos 35 - 36 - 44) - 3 used	7.50	1.50
73	45	50c olive CB typo overprint - horizontal pair - both overprints misplaced to centre - 2 LH		4.00
74	45	50c olive CB typo overprint - block of 4 with left selvages - 3 LH (2 with rust stains) + 1 UM	12.50	2.00

BELGIAN CONGO STUDY CIRCLE
POSTAL AUCTION SALE 2005(3)

LOT	COB	DESCRIPTION	COB	Min. BID
75	45	50c olive CB typo overprint -top right corner block of 8 (4x2) with all selvages and sheet number 127 - 2 large overprints (sheet pos 4 & 10) - 10 LH (paraffine)	27.50	5.00
76	45-Cu	50c olive CB typo overprint - INVERTED OVERPRINT - unmounted - scarce item	625,00++	350.00
77	46	1 fr carmine CB typo overprint - block of 4 - used E'ville - perf 13,5	48.00	10.00
78	47	3,50 fr vermillon CB typo overprint - sheet pos 32 - used Leopoldville Telegr Feb 10th, 1910	25.00	5.00
79	47	3,50 fr vermillon CB typo overprint - block of 4 - used Boma January 2nd, 1914 - fine	100.00	30.00
80	48	5 fr carmine CB typo overprint - Balasse variety V11 - mint without gum	58.00	11.00
81	48	5 fr carmine CB typo overprint - Balasse variety V8 - used E'ville	30.00	6.00
82	49a	10 fr green perf 14 CB typo overprint - sheet pos 41 "bottom corners doubled" - used E'ville Oct 1910	25.00	5.00

Princes issue - typo overprints

83	41 PT	10 c carmine Prince typo issue, sheet number 42, used Matadi	45.00	10.00
84	46 PT	1 fr carmine Prince typo issue, block of 4 - sheet number 31-32-36-37 ,4 LH but some stains on face - must be cleaned otherwise scarce item	400.00	40.00
85	47 PT	3,50 frs vermillon Prince issue typo T2 large overprint - used Matadi	130.00	25.00
86	49 PT	10 Fr green Prince typo issue, sheet number 1, "CUNGO variety, used Matadi	50.00	15.00
87	49 PT	10 Fr green Prince typo issue, sheet number 4, used Boma Telegraphic	50.00	10.00
88	49 PT	10 Fr green Prince typo issue, sheet number 27, used Matadi	50.00	10.00
89	49 PT	10 fr green Prince issue - sheet pos 41 "bottom corners doubled" - used E'ville Oct 1910	50.00	10.00

Red Meter Marks

see BCSC article in bulletin #33 and further

90		Hassler Machine B16 on cover cancelled Léo 1 + publicity "CONGO UNI PAYS FORT" to Brussels - 19,00 frs		4.00
91		Hassler Machine 5 ("B" omitted) - essay on small piece - 3.50		5.00
92		Hassler Machine B6 - essay on red small piece - *000		3.00
93		Hassler Machine B6 - essay on red small piece - *000		3.00
94		Hassler Machine B7 (error "7" reversed) - essay on small piece - *000		5.00
95		Universal Machine U2 - essay on small piece at Leo July 4th, 1949 - *000		3.00
96		Universal Machine U8 - essay on small piece - no town - *000		3.00
97		Universal Machine U9 - essay on small piece at E'ville Jan 23th, 1951 - *000		3.00
98		Universal Machine U9 - essay on small piece at E'ville Jan 23th, 1951 - *000		3.00
99		Universal Machine U10 - essay on small piece at E'ville Aug 8th, 1951 - 0100		3.00
100		Universal Machine U12 (large) - essay on small piece at Leo May 10th, 1951 - *0000		4.00
101		Universal Machine U13 - essay on small piece at Leo July 13th, 1951 - 0000		3.00
102		Universal Machine U15 (large) - essay on piece at Leo Sept 18th, 1952 - 00000		4.00
103		Universal Machine U16 (large) - essay on small piece at Leo Aug 29th, 1952 - *0000		4.00
104		Universal Machine U17 - essay on small piece at Léo Sept 2nd, 1952 - 0000		3.00
105		Satas Machine N150 - essay on small piece *0.00		3.00
106		Satas Machine N150 - essay on small piece *0.00		3.00
107		Francotyp Machine F3 + "SIMBA" - essay on envelope at E'ville July 16th, 1952 - 0.00		5.00
108		Francotyp Machine F4 - essay on envelope at Costermansville May 23th, 1951 - 0.50		5.00
109		Francotyp Machine F5 + "CIMENTS du Katanga" - essay on envelope - no town - *00.00		5.00
110		Francotyp Machine F6 (special type) - essay on small piece Léo Oct 14th 1952 - *0.00		4.00
111		Francotyp Machine F10 - essay on envelope at Jadotville Oct 10th, 1952 - *00.00		5.00
112		Francotyp Machine F12 - essay on envelope - no town - *0.00		4.00

Postal Stationery

113	21	Postal Stationery Stibbe #21 - typographic CB overprint T3B - toned paper - mint		3.00
114	27	Postal Stationery Stibbe # 27 (15c, unilingual 1909 issue) used from Thysville January 25th, 1910 to Brussels (Feb 19th) - very fine and scarce item		25.00
115	31 TT	Postal Stationery Stibbe 31TT with framed Boma Carte Incomplete on demand card + 5c green bilingual 1910 (out) used from Stanleyville Sept 9th, 1911 to Anvers / Belgium (oct 24th) - very nice elephant drawing at black ink on back size		12.00
116		EAAOB - mint picture postcard with the same view of EAAOB Postal stationery ("marais de la Kagera") - scarce		5.00
117		EAAOB - mint picture postcard with the same view of EAAOB Postal stationery ("Lac Kivu vu du mont N'Goma") - scarce		5.00

BELGIAN CONGO STUDY CIRCLE
POSTAL AUCTION SALE 2005(3)

LOT	COB	DESCRIPTION	COB	Min. BID
118		EAAOB - mint picture postcard with the same view of EAAOB Postal stationary ("Kigali La Caserne") - scarce		5.00
119		EAAOB - mint picture postcard with the same view of EAAOB Postal stationary ("Makala Un hopital de Base") - scarce		5.00
120	53	Postal stationary Stibbe # 53 (view 1) 15c surcharge type 1 from Tshikapa type 1 1923 to Belgium		4.00
121	53	Postal stationary Stibbe # 53 (view 11) 15c surcharge type 2 from Boma type 5 1924 to Belgium		3.00
122	53	Postal stationary Stibbe # 53 (view 12) 15c surcharge type 5 from Buta type 5 1923 to Belgium ; stamp missing on view side, vertical crease		1.00
123	53	Postal stationary Stibbe # 53 (view 21) 15c surcharge type 3 from E'ville type 5 1923 to Belgium		3.00
124	53	Postal stationary Stibbe # 53 (view 22) 15c surcharge type 1 from Coquihatville type 1 1923 to Belgium		4.00
125	53	Postal stationary Stibbe # 53 (view 33) 15c surcharge type 3 from Likasi type 5 1923 to Belgium		4.00
126	53	Postal stationary Stibbe # 53 (view 38) 15c surcharge type 3 from E'ville type 5 1923 to Belgium		3.00
127	53	Postal stationary Stibbe # 53 (view 41) 15c surcharge type 3 from E'ville type 5 1923 to Belgium		3.00
128	53	Postal stationary Stibbe # 53 (view 41) 15c surcharge type 4 from Matadi type 5 1923 to Belgium		3.00
129	53	Postal stationary Stibbe # 53 (view 48) 15c surcharge type 1 written to Congo but not cancelled		3.00
130	53	Postal stationary Stibbe # 53 (view 51) 15c surcharge type 1 from Coquihatville type 1 1923 to Belgium		4.00
131	53	Postal stationary Stibbe # 53 (view 52) 15c surcharge type 3 from Likasi type 5 1923 to Belgium - stamp missing		1.00
132	53	Postal stationary Stibbe # 53 (view 64) 15c surcharge type 3 from E'ville type 1 1923 to Belgium		3.00
133	53	Postal stationary Stibbe # 53 (view 65) 15c surcharge type 3 not cancelled + 25c/40c Malines issue on view side from E'ville type 1 1923 to Belgium		5.00
134	61	Postal stationary Stibbe # 61 (view 76) from Matadi type 5 to Belgium		2.50
135	61	Postal stationary Stibbe # 61 (view 82) + 45c Leys from Léo type 7 to Belgium		4.00
136	61	Postal stationary Stibbe # 61 (view 85) + 15c Vloors not cancelled on view side from E'ville type 5 to Belgium		2.50
137	61	Postal stationary Stibbe # 61 (view 92) + 25c Vloors and 15c Vloors on view side from Madimba type 5 to France ; backstamped Paris March 25th, 1925		5.00
138	61	Postal stationary Stibbe # 61 (view 116) + from Boende type 5 Nov 1th, 1922 to Belgium		4.00
139	61	Postal stationary Stibbe # 61 (view 119) + 10c Vloors from E'ville type 5 to Belgium		3.00
140	62	Postal stationary Stibbe # 62 (view 75) + from E'ville type 1 Feb 27th, 1925 to Belgium		5.00
141	62	Postal stationary Stibbe # 62 (view 77 tennis) + from E'ville type 1 Feb 27th, 1925 to Belgium		7.50
142	62	Postal stationary Stibbe # 62 (view 88) + from E'ville type 1 Feb 27th, 1925 to Belgium		5.00
143	62	Postal stationary Stibbe # 62 (view 113) + from E'ville type 1 Feb 27th, 1925 to Belgium		5.00
144	66	Postal stationary Stibbe # 66 (view 2) + COB 171 (both cancelled by pencil) Trace of cancel on card (not readable).. Aug 24th, 1932 to Belgium		3.00
145	66	Postal stationary Stibbe # 66 (view 13) + 15c Vloors from E'ville to Belgium		3.00
146	66	Postal stationary Stibbe # 66 (view 29) + 15c Vloors from E'ville to Belgium		3.00
147	66a	Postal stationary Stibbe # 66 (view 4) + 15c Vloors from E'ville 1929 to Belgium		5.00
148	66a	Postal stationary Stibbe # 66 (view 10) + 15c Vloors from Stanleyville 1932 to Belgium		5.00
149	66a	Postal stationary Stibbe # 66 (view 16) + 15c Vloors from Likasi 1930 to Belgium ; transit Anvers		6.00
150	66a	Postal stationary Stibbe # 66 (view 48) + 15c Vloors (out) from Likasi 1929 to Belgium ; backstamped Anvers		3.00
151	66	Postal stationary Stibbe # 66 (view 32) + 15c Vloors(out) from E'ville 1929 to Belgium - card completely toned		1.50
152	Kat 1	Katanga Letter Card #1 - mint - perfect		3.00

BELGIAN CONGO STUDY CIRCLE
POSTAL AUCTION SALE 2005(3)

LOT	COB	DESCRIPTION	COB	Min. BID
Cancellations				
153	1910	LUKAFU 1.1 & 1.2 on postal stationary Stibbe # 21 Locale CB L7 from Lukafu 1.1 Sept 5th, 1910 to Brussels ; transits at Lukafu 1.2 (at E'ville) Sept 12th and Brussels October 16th - both Lukafu on same PSE - scarce		18.00
154	1913	KALONGA 1.1 - Picture Postal Stationery Stibbe #42 (view 48) used from Kalonga May 14th, 1913 to Louvain / Belgium - postman number cancel at arrival - sent as printed matter rate - very scarce cancellation		250.00
155	1913	KABINDA 1.1 on Postal stationery Stibbe # 36 from Kabinda April 1st, 1913 to Pania Mutombo - scarce		15.00
156	1914	AVAKUBI 1.1 - 10c. Carmine bilingual 1910 on picture postcard (on view side) from Avakubi May 23th, 1914 to Jambes / Belgium ; transits at Stanleyville June 4th, Léopoldville June 27th and Jambes July 25th - cancel Avakubi 1.1 - blue - last deformed state - scarce		18.00
157	1917	BPCVPK N°8 on picture postal stationary Stibbe #43 (view 14) from BPCVPK N°8 at Oct 9th, 1917 to Breda / Holland ; transits Kigoma Nov 5th, postman number cancel		18.00
158	1917	BPCVPK N°5 on picture postal stationary Stibbe #43 (view 13) from BPCVPK N°5 on Apr 13th, 1917 to Holland ; green framed 3 lines "Passed by postal censor Daressalaam"		25.00
159	1918	Picture Postal Stationery Stibbe #42 (view 35) used from Kigoma March 7th, 1918 to London - sent as printed matter rate - circular blue cancel with star "CENSURE MILITAIRE COMD DU BON" (very scarce EAAOB censor)		80.00
160	1925	LIKASY telegraphic cancel on picture postal stationary Stibbe # 61 (view 89) + Vloors 15c, from Likasi (octagonal cancel) Sept 10th, 1925 to Gedinne / Belgium - scarce		15.00
Other Mols issues				
161	101-Cu	10c/1Fr olive Boma issue - INVERTED surcharge, LH	42.00	12.00
162	104	0,25/30c/10c carmine bilingual 1910 - E'ville type I surcharge - block of 4 with left selvedge - framed TAXES type IX + cancelled E'ville	80.00	24.00
163	105	0,25/30c/10c carmine bilingual 1915 - E'ville type I surcharge - bottom right corner block of 4 with all selvedges - 4 LH - scarce	120.00	40.00
164	62	5 fr carmine bilingual 1910 - used Monveda 1912 - perf 15 - perfect and scarce	60.00	18.00
165	91	1fr carmine 1921 issue block of 4 with right selvedge, perf 15 - 4 UM	5.00	1.25
166	92	3 fr red 1921 issue with watermark, LH	3.25	1.00
167	93	5 fr carmine 1921 issue block of 4 with top selvedge, perf 14, 4 UM - very fine	96.00	18.00
168	RU 16	5c green URUNDI TOMBEUR overprint - LH	130.00	25.00
169	RU 17B	10c carmine URUNDI Havre overprint - LH	25.00	5.00
170	RU 19B	25c blue URUNDI Havre overprint - LH	25.00	5.00
171	RU 21A	50c red brown URUNDI Grysolle overprint - LH	80.00	24.00
MARITIME Cancellations				
172		Postal stationery Stibbe #42 cancelled by violet straight line "PAQUEBOT LEOPOLDVILLE" (4) to Belgium ; transit La Rochelle June 23th, 1913 - very nice and scarce item		200.00
173		Picture post card with COB175 cancelled by "COURRIER DE HAUTE MER - PAQUEBOT LEOPOLDVILLE"		4.00
174	1921	MATADI A BORDEAUX LLN°3 on picture postal Stationery Stibbe #43 (view68) posted at sea on French paquebot and cancelled by post office on board, May 27th 1921 to France - scarce French maritime cancel on Belgian Congo stamps		75.00
175	1911	BORDEAUX A MATADI LLN°3 on picture postcard (Dahomey) with French 10c, red stamps "Marianne" type posted at sea on French Paquebot and cancelled by post office on board, January 2nd, 1911 to Auxerre / France (Jan 21th) - scarce cancel on this route		18.00
176		Belgian stamps COB 1647 on cover cancelled with 2 circles cancel MOMBASA PAQUEBOT Sept 4th, 1973" + straight line "TENIERS" on cover to Germany - unusual		3.00
177		Belgian stamp COB 961 on cover cancelled Matadi Aug 28th, 1956 + framed PAQUEBOTS of Matadi on cover + staight line "M/S LUBILASH" and "ANVERS" on printed matter rate to USA - unusual		3.00
178		Belgian stamp COB 961 on cover cancelled Matadi I JACINTHE D'EAU Dec 11th, 1956 + framed PAQUEBOTS of Matadi on cover + staight line "S:S MARCHOVELETTE" on printed matter rate to USA - unusual		3.00

BELGIAN CONGO STUDY CIRCLE
POSTAL AUCTION SALE 2005(3)

LOT	COB	DESCRIPTION	COB	Min. BID
179		Picture postcard view S/S ANVERSVILLE 2 - used from Anvers to Brussels		4.00
180		Picture postcard view S/S ANVERSVILLE 2 - used with 2 french stamps (5c+10c Marianne) from La Rochelle Dec 12th, 1926 to Holland - fine		10.00
181		Picture postcard view S/S ANVERSVILLE 2 - mint		4.00
182		Picture postcard view S/S ANVERSVILLE 2 - in blue - mint		4.00
183		Picture postcard view S/S THYSVILLE 1 - 5c+15c Floors cancelled by unreadable paquebot cancel to Brussels - 1925		4.00
184		Coloured picture postcard view S/S ALBERTVILLE 4 - mint		4.00
185		Coloured picture postcard view S/S ALBERTVILLE 4 - mint		4.00
186		Coloured picture postcard from CBMC booklet - mint		1.00
187		Picture postcard view S/S ANVERSVILLE 2 - mint		4.00
188		Picture post card (travelled in envelope) with small violet straight line "S/S ANVERSVILLE" on view side - Feb 23th, 1901 - no stamp - addressee "au docteur du Steamer Anversville / en rade" - fine		4.00

COVERS

189	1917	50c. Red brown Mols 1915 with EAAOB overprint used on registered cover from Kigoma July 4th, 1917 to Baarle Duc (Belgian enclave in Holland during WWI) where it arrived at Oct 4th, 1917 - backstamped red London + straight line "CENSURE MILITAIRE" + EST AFRICAIN ALLEMAND OCCUPATION BELGE DISTRICT D'UDJDJI" (3 lines cancel) - scarce		75.00
190	1926	1 Fr olive (vertical pair) bilingual 1915 + 50c. Red brown Floors issue on registered cover from E'ville Sept 7th, 1925 to Huddersfield / England ; backstamped red London registered October 4th, 1925 - very nice and scarce franking - very short period for this postage rate (8/1/26 to 12/31/26) = 1,25 fr international rate + 1,25 fr registration - only 4 month		60.00
191	1949	COB 266+ 275 on airmail cover from Coquihatville to Belgium		1.00
192	1950	COB 291+347 on business cover from Léopoldville 1T to Switzerland		1.00
193	1959	COB 307+314 on picture postcard (elephant) from Matadi to Spa (arrival Aug 7th, 1959)		5.00

EAAOB issue

194	28A	5c. Green Mols 1915 V2+E2 - EAAOB SHORT overprint - sheet pos 33 - LH	2.50	1.00
195	31B	25c blue Mols 1915 III1+B - EAAOB L1 overprint - sheet pos 38 - perf 15 - LH - some rust stains on perf	24.00	2.50
196	31B	25c blue Mols 1915 III1+B - EAAOB L1 overprint - block of 4 - sheet pos 24/25/29/30 - perf 15 - 4 LH - scarce - (perf 15 --> value COB x 4)	384.00	50.00
197	33A	50c. Red brown Mols 1915 III4+B1 - EAAOB SHORT overprint - sheet pos 35 - LH	45.00	12.00
198	33A	50c. Red brown Mols 1915 III4+B1 - EAAOB SHORT overprint - sheet pos 35 - LH	45.00	12.00

unsold lots from BCSC 2005-2 at reduced prices

Congo Free State - Mols issues

199	27	3,50 Fr vermillon Mols 1894 issue - used Boma 3 may	125.00	10.00
-----	----	---	--------	-------

Belgian Congo 1909 - Local overprint

200	37 L5	3,50 fr vermillon - CB Local L5 overprint - bottom left corner with all selvages (sheet pos 46) - LH - very fine	330.00	80.00
201	38 L1	5fr deep carmine (scarce) - CB Local L1 overprint - perf 15 - used in 1911 - framed TAXES - very fine	60.00	18.00
202	38 L1	5fr rose-carmine - CB Local L1 overprint - LH - very fine	110.00	20.00
203	38 L1	5fr rose-carmine - CB Local L1 overprint - perf 15 - used Telegr BOMA 8/29/09 - very fine	60.00	12.00
204	38 L1	5fr rose-carmine - vertical pair - CB Local L1 overprint - used	120.00	20.00

Belgian Congo 1909 - Typographic overprint

205	44	40c, blue-green CB typo overprint - MISPLACED "à cheval" at top - used Bumba 1/1/13 - sheet pos 48		5.00
206	45	50c, olive CB typo overprint - MISPLACED in the centre - used E'ville - sheet pos 48		5.00
207	46	1 fr carmine CB typo overprint - Damaged 2nd E, sheet pos 32 - used	12.00	1.25
208	47	3,50 fr vermillon CB typo overprint - sheet pos 22 - used	25.00	3.00
209	47	3,50 fr vermillon CB typo overprint - Damaged 2nd E, sheet pos 32 - LH	32.00	4.00

BELGIAN CONGO STUDY CIRCLE
POSTAL AUCTION SALE 2005(3)

LOT	COB	DESCRIPTION	COB	Min. BID
210	48	5fr rose-carmine CB typo overprint - horizontal pair - used Boma ??/11/1912 - sheet pos 49/50 - fine	60.00	10.00
211	48	5fr rose-carmine CB typo overprint -perf 13,75 - sheet pos 25 - LH - fine	58.00	7.00
212	49	10fr green perf 12 - CB typo overprint - Damaged 2nd E, sheet pos 32 - used Matadi 12/21/10 - fine	28.50	4.00

Princes issue - typo overprint

213	41 PT	10c, carmine CB typo Princes overprint - sheet pos 45 - used Boma	45.00	12.00
214	41 PT	10c, carmine CB typo Princes overprint - sheet pos 9 - used Kinshasa 7/22/09	45.00	12.00
215	41 PT	10c, carmine CB typo Princes overprint - sheet pos 10 - used Boma 6/27/09	45.00	12.00
216	41 PT	10c, carmine CB typo Princes overprint - sheet pos 5 - used Matadi 6/18/09	45.00	12.00
217	42 PT	15c, ochre CB typo Princes overprint - sheet pos 6 - LH	100.00	30.00
218	42 PT	15c, ochre CB typo Princes overprint - sheet pos 11 - LH	100.00	30.00
219	42 PT	15c, ochre CB typo Princes overprint - sheet pos 12 - unused without gum	100.00	20.00
220	42 PT	15c, ochre CB typo Princes overprint - sheet pos 13 - used Nouvelles Anvers 9/10/09	45.00	12.00
221	42 PT	15c, ochre CB typo Princes overprint - sheet pos 15 - used Basankusu	45.00	12.00
222	42 PT	15c, ochre CB typo Princes overprint - sheet pos 19 - LH	100.00	30.00
223	42 PT	15c, ochre CB typo Princes overprint - sheet pos 20 - used Avakubi 10/24/10 - perfect	45.00	12.00
224	42 PT	15c, ochre CB typo Princes overprint - sheet pos 22 - LH	100.00	30.00
225	42 PT	15c, ochre CB typo Princes overprint - sheet pos 23 - LH	100.00	30.00
226	42 PT	15c, ochre CB typo Princes overprint - sheet pos 26 - LH	100.00	30.00
227	42 PT	15c, ochre CB typo Princes overprint - sheet pos 27 - LH	100.00	30.00
228	42 PT	15c, ochre CB typo Princes overprint - sheet pos 28 - used Léo type 5 - 10/4/23 - curious	45.00	12.00
229	42 PT	15c, ochre CB typo Princes overprint - sheet pos 29 - LH	100.00	30.00
230	42 PT	15c, ochre CB typo Princes overprint - sheet pos 31 - UM - with left selvedge	125.00	30.00
231	42 PT	15c, ochre CB typo Princes overprint - sheet pos 32 - used Albertville 8/25/09 - perfect	45.00	12.00
232	42 PT	15c, ochre CB typo Princes overprint - sheet pos 33 - LH	100.00	30.00
233	42 PT	15c, ochre CB typo Princes overprint - sheet pos 35 - used Nouvelles Anvers	45.00	12.00
234	42 PT	15c, ochre CB typo Princes overprint - sheet pos 36 - unused without gum	100.00	20.00
235	42 PT	15c, ochre CB typo Princes overprint - sheet pos 37 - framed TAXE - LH	45.00	12.00
236	42 PT	15c, ochre CB typo Princes overprint - sheet pos 38 - LH	100.00	30.00
237	42 PT	15c, ochre CB typo Princes overprint - sheet pos 39 - used Uvira	45.00	12.00
238	42 PT	15c, ochre CB typo Princes overprint - sheet pos 40 - framed TAXE - LH	45.00	12.00
239	42 PT	15c, ochre CB typo Princes overprint - sheet pos 42 - used Léo 9/11/09	45.00	12.00
240	42 PT	15c, ochre CB typo Princes overprint - sheet pos 44 - used Léo	45.00	12.00
241	42 PT	15c, ochre CB typo Princes overprint - sheet pos 45 - used Kinshasa	45.00	12.00
242	42 PT	15c, ochre CB typo Princes overprint - sheet pos 46 - used Irebu	45.00	12.00
243	42 PT	15c, ochre CB typo Princes overprint - sheet pos 47 - framed TAXES type 9 - LH	45.00	12.00
244	42 PT	15c, ochre CB typo Princes overprint - sheet pos 48 - framed TAXE - LH	45.00	12.00
245	42 PT	15c, ochre CB typo Princes overprint - sheet pos 49 - used Basankusu 11/3/10	45.00	12.00
246	42 PT	15c, ochre CB typo Princes overprint - sheet pos 21 - used Boma 12/25/09	45.00	12.00
247	42 PT	15c, ochre CB typo Princes large overprint - sheet pos 50 - used Lusambo 1910	90.00	18.00
248	42 PT	15c, ochre CB typo Princes overprint - used Boma 02/10/09	45.00	12.00
249	47 PT	3,50 fr, vermilion CB typo Princes overprint - sheet pos 43 - used Matadi	65.00	14.00
250	47 PT	3,50 fr, vermilion CB typo Princes overprint - sheet pos 45 - used Boma	65.00	12.00
251	48 PT	5fr carmine CB typo Princes overprint - horizontal pair - 2 UM	270.00	60.00
252	48 PT	5fr carmine CB typo Princes overprint - UM	135.00	30.00

Red Cross issue - A.0.

253	RU 39	25c, blue Red Cross AO issue, complete mint sheet - perf 15 - 50 UM	250.00	12.00
254	RU 39	25c, blue Red Cross AO issue, special imperforate printing - block of 4 with bottom selvedge, no gum - fine		5.00
255	RU 40	40c, camine-brown Red Cross AO issue, special imperforate printing - block of 4 with bottom selvedge, no gum - fine		5.00
256	RU 43	5 fr ochre Red Cross AO issue, special imperforate printing - block of 4 with left selvedge, no gum - fine		12.00

**BCSC
POSTAL AUCTION SALE 2005-3**



Lot 13



Lot 14



Lot 15



Used after 1920 by
Waterlow & Sons

Lot 16



Lot 22

**BCSC
POSTAL AUCTION SALE 2005-3**

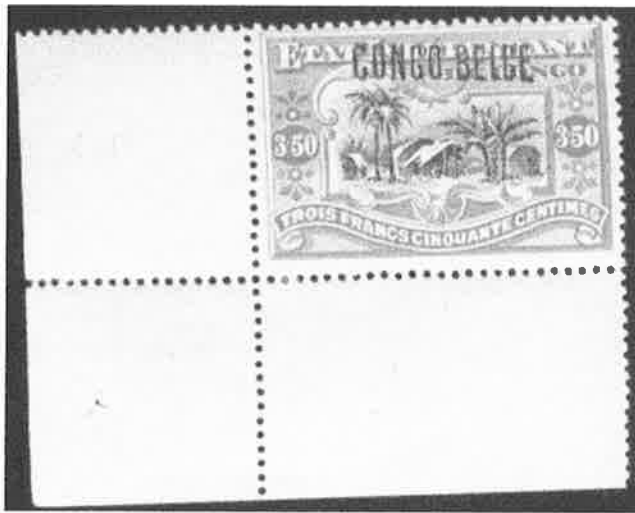


Perforated 12 X 14

Lot 18



Lot 19



Lot 200



Local 4, oblique

Lot 33



Lot 63



Lot 46

**BCSC
POSTAL AUCTION SALE 2005-3**



Lot 76



Lot 154

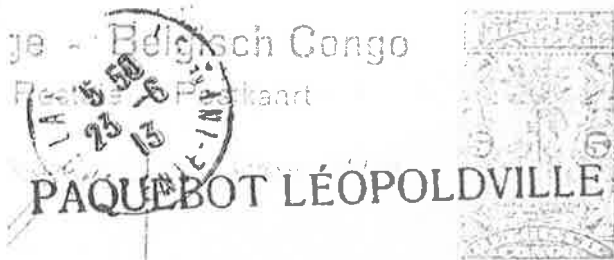


Lot 156

Belgisch Congo
le - Postkaart



Lot 159



Lot 172



Lot 174